

# ***SUPERIOR<sup>®</sup>*** ***LOCKERS***

***LIST INDUSTRIES INC.***

***AMERICA'S MOST COMPLETE LOCKER LINE<sup>®</sup>***

***LISTINDUSTRIES.COM***

## ***FULLY-FRAMED ALL-WELDED LOCKERS***



***PROUDLY MADE IN AMERICA SINCE 1936***



## **CONTINUOUS 16 GAUGE FLAT TOP**

Optional slope  
top available

## **STANDARD SAFETY MINDED SELF-CLOSING TOP HINGED DOORS**

Continuous  
hinge rods safely  
concealed.

Standard on doors  
12" high and under.

## **TWO TONE COLOR OPTION AT NO ADDITIONAL CHARGE**



**GALVANNEAL**  
shelves and bottom  
for added corrosion  
resistance.

## **1/2" MESH VENTILATED SIDES**

13 gauge flattened  
expanded metal  
protected and  
fully-framed by our  
unique structured  
roll formed Hollow-T  
framing system.  
Fully framed solid  
sides are optional

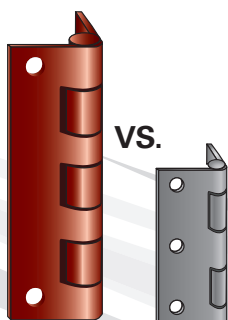
## **FULL HEIGHT DOOR STIFFENER**

Standard for all  
Doors 20" high  
and above that are  
over 15" wide and  
all marquis lockers.  
Available as an  
option on other  
doors.

**14 GAUGE  
GALVANNEAL** channels  
both front and back provide  
corrosion resistance at locker  
bottom

## **WHAT A DIFFERENCE**

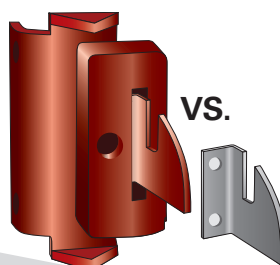
Our 13 gauge  
3-1/2" 7-Knuckle  
hinge vs the  
industry's standard  
2" KD locker hinge



## **SUPERIOR HINGES**

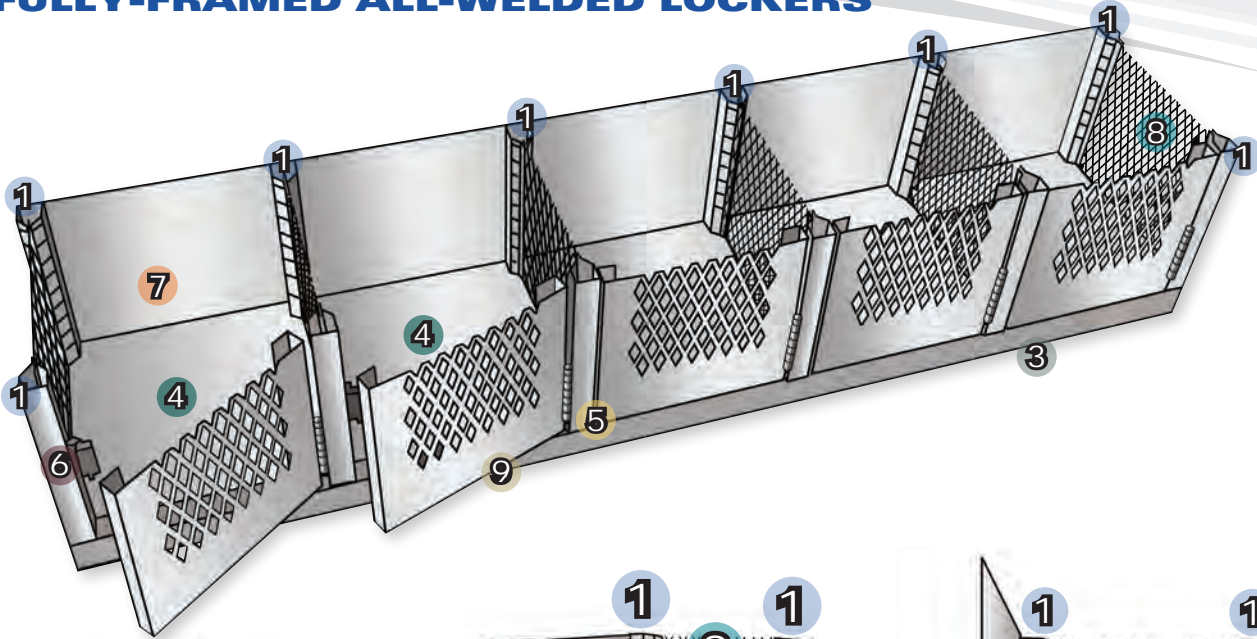
## **THE INDUSTRY'S, BEST LATCH**

Our rugged 11 gauge MIG  
welded latch hook with  
large riveted bumper  
vs the industry common KD  
style latch

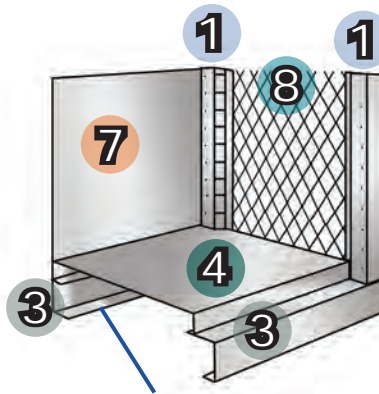


## **SUPERIOR LATCHES**

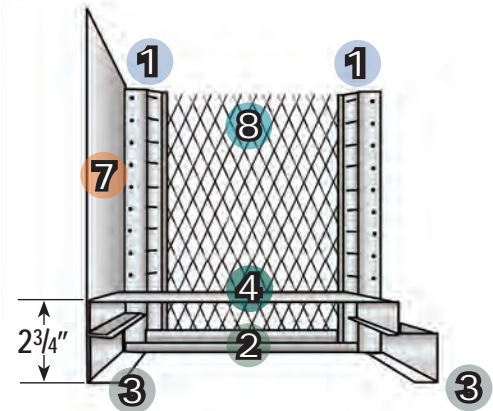
## THE STRUCTURAL INTEGRITY OF OUR FULLY-FRAMED ALL-WELDED LOCKERS



**6-Bend Structural roll-formed vertical framing member**



**14 gauge cold rolled horizontal channel base frame members run continuous across full width of multiple column unit at front and back.**



**SUPERIOR® fully-framed locker bottoms are a full 2-3/4" above finished floor eliminating the need for and additional base**

**1** Structural roll formed 16 gauge Hollow-T tubular frame members run top to bottom at all four corners of each locker column.

**2** 16 gauge double channel horizontal frame members run front to back at top and bottom.

**3** 14 gauge galvaneal horizontal channel base frame members, front and back, run continuous across the full width of a multiple column locker unit. Channels are galvaneal for added corrosion resistance

**4** 16 gauge galvaneal bottom & intermediate shelves are corrosion resistant and locked into frame at all four corners and securely MIG welded.

**5** Heavy-duty 13 gauge 7 knuckle 3-1/2" hinges are the industry's strongest hinge

**6** 11 gauge MIG welded latch hooks with large riveted-on bumper, far exceeding industries standards

**7** 18 gauge solid back is continuous across multiple locker columns

**8** 13 gauge 1/2" diamond pattern, flattened expanded metal sides are enclosed on all four sides by the structural Hollow-T framing system

**9** 14 gauge doors are available in diamond perforated, solid, louvered or mini louvered



**SUPERIOR<sup>®</sup> DESIGN AND ENGINEERING  
CREATE THE INDUSTRIES STRONGEST AND SAFEST LOCKER**



**STRUCTURALLY  
FULLY-FRAMED**



**ANGLE FRAME  
CONSTRUCTION  
WITH 3/4" EXPANDED  
METAL**



**UNIBODY  
CONSTRUCTION  
WITH SIDE AND FRAME  
OF ONE PIECE**



**KD  
CONSTRUCTION  
WITH INDIVIDUAL  
COMPONENTS**

**SUPERIOR'S UNIQUE STRUCTURAL HOLLOW-T SIDE PANEL FRAMES**

are the strongest, safest and most rigid structure in the industry utilizing welded vertical Hollow-T framing members and horizontal channels to enclose expanded metal on all four sides. Superior's Hollow-T side panels have substantially more steel than all competitors.

**SUPERIOR<sup>®</sup> FULLY-FRAMED  
LOCKER BOTTOM**



**LOCKER SIDES EXTEND TO FLOOR/BASE FOR  
MAXIMUM STRENGTH AND STABILITY OF  
LOCKER INSTALLATION**

**COMPETITOR  
LOCKER BOTTOM**



**NO REINFORCEMENT!**

## SAFEMESH 84™

THE INDUSTRY'S STRONGEST AND SAFEST EXPANDED METAL



### COMPETITOR

3/4" MESH  
13 GAUGE FLATTENED  
EXPANDED METAL



### SUPERIOR

1/2" MESH  
13 GAUGE FLATTENED  
EXPANDED METAL

**STRENGTH:** 84% more steel ensures a stronger more rigid unit than 3/4" mesh

**SAFETY** 1/2" mesh design keeps fingers out

**SECURITY:** Reduces risk of loss, theft and content damage



## SUPERIOR® LOCKERS LOCK BARS ARE INSTALLED AFTER THE DOORS ARE PAINTED



SUPERIOR® LOCK CHANNEL

**ROLL FORMED G90 HOT DIPPED GALVANIZED LOCK BARS** are installed after the doors are painted to ensure complete paint coverage, corrosion resistance and smoother lock bar operation. Others use standard steel and/or install the lock channel before paint trapping moisture in, preventing proper paint coverage leading to corrosion problems.

Dupont® Supertough® nylon latches are made in the USA and are installed after paint to insure a lifetime of superior performance. Use of lower quality plastics and/or installing before paint can cause brittleness and poor performance.

### OUR STEEL

Most of our steel is purchased directly from US mills and is made of 30% post consumer recycled content and 11.3% post industrial/pre-consumer content.

### OUR PAINT

Sherwin Williams powders are made in the USA insuring no harmful materials.

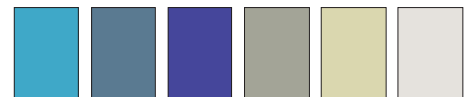
**Hammeritone** textured finishes are available for all 24 standard colors.

**Medsafe**® antimicrobial finishes with Microban® are available for all 24 colors



### WE ARE GREENGUARD GOLD CERTIFIED

GREENGUARD Gold Certification establishes strict chemical emission standards for products intended for use in environments where children and others work, play or reside.



**SUPERIOR DESIGN AND ENGINEERING**



**DIAMOND PERFORATED DOORS**

Standard for Athletic Team, P.E., Marquis<sup>®</sup> Champion and TA-50 Equipment Manager fully-framed lockers. (Optional for other locker types)



**LOUVERED DOORS**

Standard For Graduate<sup>™</sup> Fully-Framed Corridor Lockers. (Optional For Other Locker Types)



**SOLID, DOORS WITH VENTED TOP AND BOTTOM FLANGES**

Standard for Marquis<sup>®</sup> Protector Fully-Framed lockers. (Optional for other locker types)



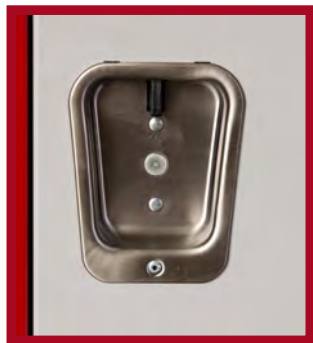
**SECURITY-PLUS VENTILATION**

Standard for the foot locker fronts of All-Star<sup>™</sup> lockers. (Optional for other locker types)

# FULLY FRAMED ALL-WELDED LOCKER

## FEATURES & OPTIONS

### LOCKER HANDLE AND LATCHING OPTIONS



#### **304 STAINLESS STEEL DEEP-DRAWN RECESSED HANDLE WITH GRAVITY LIFT-TYPE LATCHING**

Standard for Athletic Team and Graduate corridor Wardrobe lockers.



#### **304 STAINLESS STEEL DEEP-DRAWN RECESSED HANDLE**

With single-point latching standard for all Marquis® lockers and optional for side hinged PE box lockers.



#### **HEAVY-DUTY HIGH SECURITY PROJECTING TURN-HANDLE WITH 3-POINT POSITIVE LATCHING**

Optional for Athletic Team wardrobe lockers. Standard for all Marquis® lockers and optional for side hinged PE Box lockers.



#### **HEAVY-DUTY SPRING LATCH HANDLE**

Standard for all top-hinged box doors. Features self-closing with stainless steel spring mechanism. (Optional for other locker types)



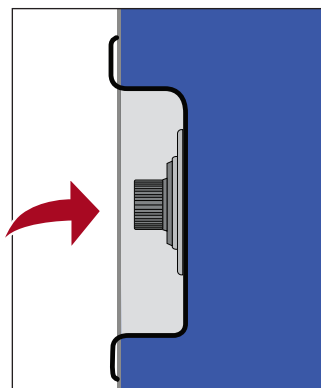
#### **FRICTION CATCH FINGER-PULL HANDLE**

Standard for all side hinged box doors.



#### **RECESSED HANDLE**

Recessed handle is deep enough to prevent lock from protruding beyond locker face to protect adjacent lockers from marring.





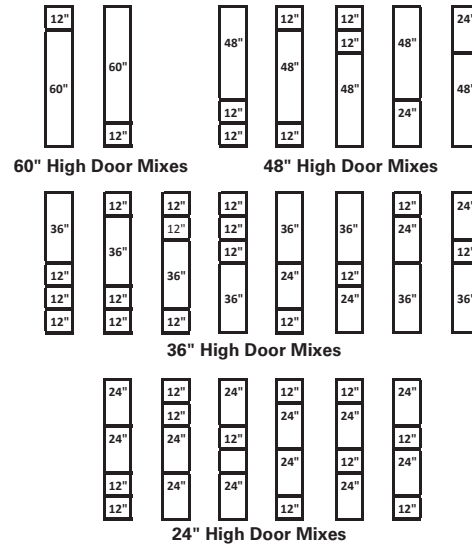
# SUPERIOR<sup>®</sup> LOCKERS

AMERICA'S MOST COMPLETE LOCKER LINE<sup>®</sup>

## CUSTOMIZE TO MEET YOUR NEEDS

- ✓ **No Costly Engineering**
- ✓ **No Added Lead-Time**
- ✓ **No Set-Up Charges**
- ✓ **No Problem!**

Our unique Hollow-T framing system allows you to mix and match doors to create the perfect storage solution.



*FOR MORE INFO GO TO  
[LISTINDUSTRIES.COM](http://LISTINDUSTRIES.COM)*



**ALL STAR<sup>™</sup>  
SPORT LOCKERS**



**ATHLETIC PE  
& TEAM LOCKERS**



**MARQUIS<sup>®</sup> PROTECTOR  
CORRIDOR LOCKERS**



**GRADUATE<sup>™</sup>  
CORRIDOR LOCKERS**



**MARQUIS<sup>®</sup> CHAMPION  
ATHLETIC LOCKERS**



**TA-50 EQUIPMENT  
MANAGER**



**Proudly Made in  
America  
Since 1936**



**LISTINDUSTRIES.COM  
1-800-776-1342**

**401 JIM MORAN BLVD., DEERFIELD BEACH, FL 33442**