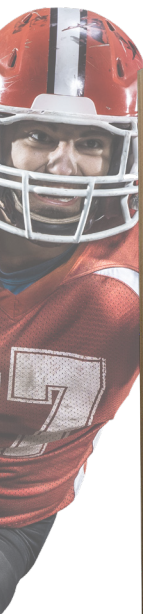


# NEW RECRUITER 2 WOOD SPORT LOCKERS



**Get Your Team GAME READY!**  
**Introducing our New Recruiter 2™**  
**Set-Back Design**



**Stock Locker:**  
 24"W x 24"D x 84"H

**24" Starter Unit Shown**  
 Includes Two Finished End Panels



## GREAT STANDARD FEATURES

- Furniture Grade Red Oak Hardwood with Two Coats of Formaldehyde-Free Catalyzed Conversion Varnish for Excellent Moisture Resistance
- Modern Contour Edges with Wood Edge Banding
- Security Box with European Soft Close Hinges
- Three Lock Options Available
- Lower Foot Locker/Seat
- Stainless Steel Coat Rod
- Three Stainless Steel Hooks
- Starter/Adder Unit Configurations
- 24" x 24" x 84"
- Ships Fully-Assembled
- Includes Toe Kick Material
- 2 x 4 Sub-Base By Others

## IN STOCK ACCESSORIES

- Front Filler 15" x 84" ..... WDEF1584RO
- Corner Filler 36" x 36" ..... WD CF363684RO  
 24" x 24" ..... WD CF242484RO
- Top Filler 15" x 12" ..... WD TF1512RO  
 24" x 24" ..... WD TF2424RO  
 36" x 36" ..... WD TF1512RO
- Shoulder Pad Rack ..... SPHR14R
- Shoulder Pad/Helmet Rack ..... SPHR18R
- Name Plate Holder 12" ..... NPH-0212S

Starter units include (2) finished end panels to be used at row ends  
 Adder units do not include finished end panels

Order (1) Starter unit for each straight run of lockers and Adder units to fill out the run



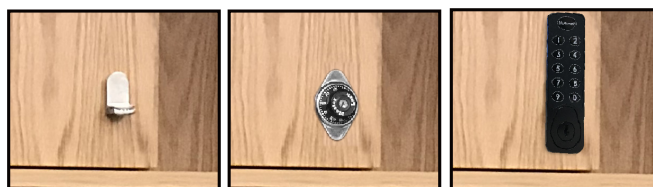
Name Plate Holder  
 NPH-0212S (12" wide)

Shoulder Pad Rack  
 SPHR14R

Shoulder Pad & Helmet Rack  
 SPHR18R

Seat Cushion (Black)  
 SC2424BK  
 SC3024BK

## IN STOCK LOCK OPTIONS



Standard Padlock  
 Cam Hasp

Built In  
 Combination Lock  
 Master Lock #1655

DigiTech-H1™  
 Electronic Lock

## OPTIONAL ADD ON ACCESSORIES

ADDITIONAL LEAD TIME FROM GAINESVILLE, FL



USB Outlet in Security Box  
 USB-4  
 USB-4-110

UV Full Color Print  
 on security box door  
 RLDOORLOGO



LEAD TIMES SHIPPING FROM MUNSTER, IN 1 - 25 24" WIDE LOCKERS 1 WEEK | 26 - 50 24" WIDE LOCKERS 2 WEEKS | 51 - 100 24" WIDE LOCKERS 3 WEEKS

CUSTOM SIZES, CONFIGURATIONS AND SPECIALS AVAILABLE AT PRODUCTION LEAD-TIMES.



CONTACT YOUR  
 REGIONAL SALES MANAGER TODAY!  
 WWW.LISTINDUSTRIES.COM  
 800-776-1342

